

**B u r l e t e s**  
*G a s k e t s*



# Burletes / Gaskets

## PUERTAS PIVOTANTES / PIVOTING DOORS

**Burletes**

Burlete fabricado en caucho extremadamente blando para temperaturas hasta - 50° C - de color negro.

**Gaskets**

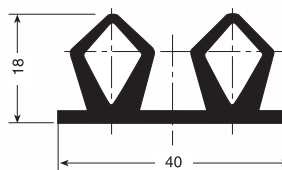
Gasket made of very soft black rubber for temperatures down to - 50° C.

**506 ( E.P.D.M. )**

Peso/Weight: 250 gr.

Largo/length: 6 m.

Cod.: F10 0474

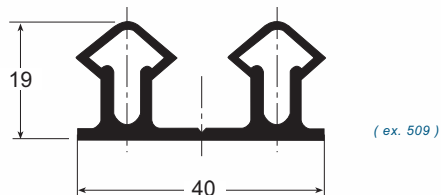


**G-67 ( E.P.D.M. )**

Peso/Weight: 230 gr.

Largo/length: 6 m.

Cod.: F10 6530

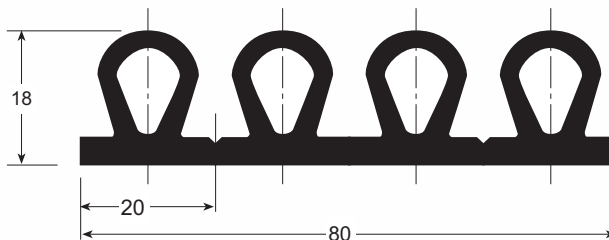


**502 ( E.P.D.M. )**

Peso/Weight: 590 gr.

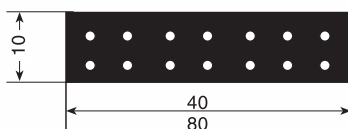
Largo/length: 6 m.

Cod.: F10 0520



**40 x10 (Espuma/Foam)**

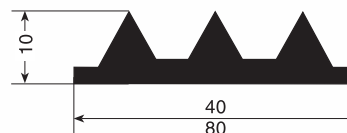
**80 x10 (Espuma/Foam)**



Código Code	Peso/g. Weight/g.	Largo Length	
F10 1594	77	10	
F10 1599	154	7	

**40 x 10 (Rígido/rigid)**

**80 x 10 (Rígido/rigid)**



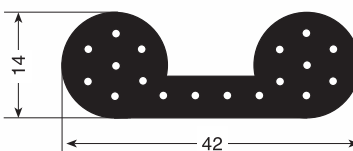
Código Code	Peso/g. Weight/g.	Largo Length	
F10 0523	250	5	
F10 0524	495	3,5	

**373 ( Espuma/Foam )**

Peso/Weight: 250 gr.

Largo/length: 25 m.

Cod.: F10 0516



# Burletes / Gaskets

## PUERTAS CORREDERA / SLIDING DOORS

A = Tensor rígido de PVC  
A = PVC fixing strip

**Burletes con tensor PVC**

Burlete fabricado en caucho blando para temperaturas hasta - 50° C - de color negro.

**Gaskets with PVC fixing profile**

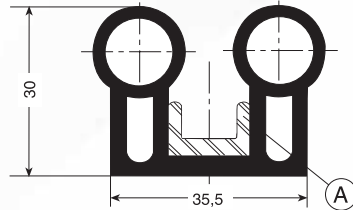
Gasket made of very soft black rubber for temperatures down to - 50° C.

**3340 ( E.P.D.M. )**

Peso/Weight: 469 gr.

Largo/length: 3 m.

Cod.: F10 0530

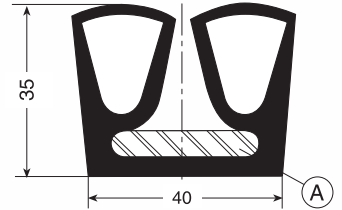


**501 ( E.P.D.M. )**

Peso/Weight: 861 gr.

Largo/length: 2 m.

Cod.: F10 0517

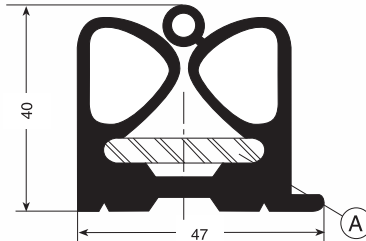


**340 ( E.P.D.M. )**

Peso/Weight: 942 gr.

Largo/length: 12 m.

Cod.: F10 0519

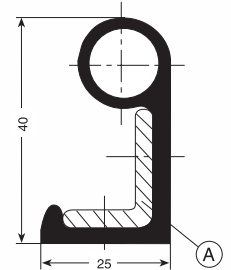


**1640/2320/2340/3340 ( E.P.T. )  
3530/7530/7640/8530**

Peso/Weight: 4800 gr.

Largo/length: 10 m.

Cod.: F10 6534

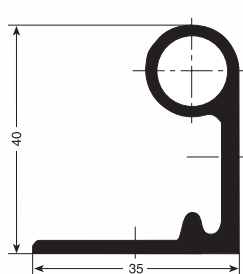


**1640/2340/3340  
3530/7530/7640/8530**

Peso/Weight: 3560 gr.

Largo/length: 10 m.

Cod.: F10 7039

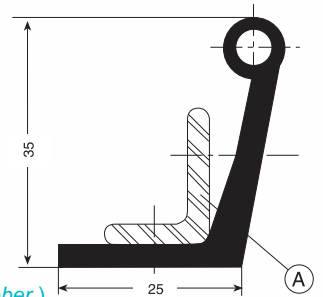


**240**

Peso/Weight: 200 gr.

Largo/length: 10 m.

Cod.: F10 1212



( Caucho natural / natural rubber )

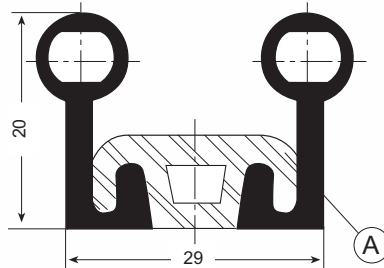
( Caucho natural / natural rubber )

**2310 - ref. 2320/716 ( E.P.D.M. )**

Peso/Weight: 5840 gr.

Largo/length: 6-7 m.

Cod.: F10 6535

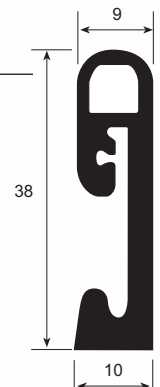


**2320 ( E.P.D.M. )**

Peso/Weight: 230 gr.

Largo/length: 10 m.

Cod.: F10 2729

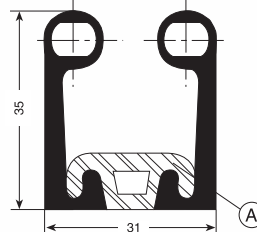


**1640/2320/2340/7640  
8530/3530/7530 ( E.P.D.M. )**

Peso/Weight: 5660 gr.

Largo/length: 24 m.

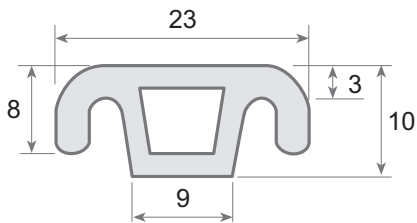
Cod.: F10 6536





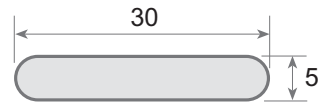
## TENSORES FIXING STRIP

**3530 / 3312**  
FIO 9450

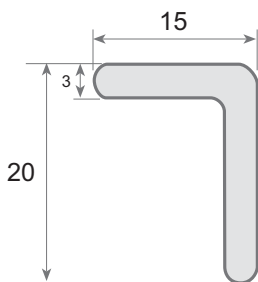


**Frontal - PVC**  
*Frontal PVC*

**501 - 17**  
FIO 3743

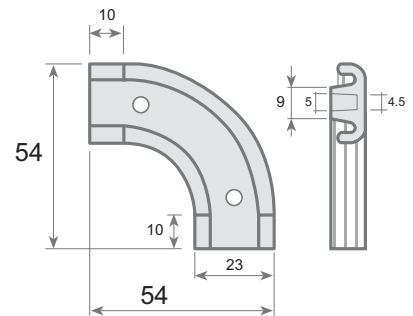


**3530 / 252**  
FIO 3742



**Bajo puerta - PVC**  
*PVC Lower door fixing strip*

**3530 / 2320**  
FIO 9452



**Angulo tensor burlete frontal PVC**  
*PVC angular fixing strip for frontal gasket*

**TENSOR**

Modelo Version	Código Code	Largo Length ( mts )	Peso Weight (gr.)
3530/3312	FIO 9450	2 mts	374 gr.
3530-252	FIO 3742	2 mts	264 gr.
501-17	FIO 3743	2 mts	322 gr.
3530/2320	FIO 9452	unidad unit	12 gr.

**Fixing  
strip**